

Scaled data based on original data using
LM-79-08 Approved Method: Electrical and Photometric Measurements of Solid-
State Lighting Products

Test Report Prepared for
Cooper Lighting Solutions
(formerly Eaton)

Brand: INVUE

Report Number: P149384

Luminaire Tested: **VWM-F04-LED-E1-SL2-HSS-7030**

Issue Date: 03/03/2020

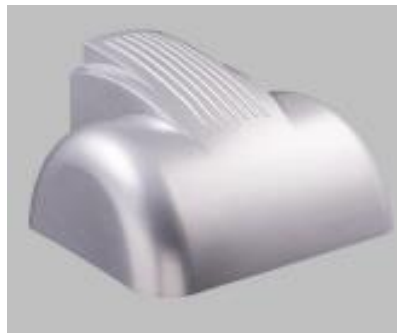
Test Information

Test Method: LM-79-08
Report Number: P149384
REPORT IS SCALED FROM IESNA LM-79-08 TEST DATA (P33726)
Test Lab: INNOVATION CENTER-P3
Issue Date: 03/03/2020
Manufacturer: COOPER LIGHTING SOLUTIONS (FORMERLY EATON)
Product Line: INVUE
Catalog Number: VWM-F04-LED-E1-SL2-HSS-7030
Description: VISION WALL MEDIUM LED LUMINAIRE
(4) LIGHTBARS WITH AccuLED OPTICS - TYPE 2 W/ SPILL LIGHT CONTROL AND HOUSE SIDE SHIELD
Light Source: (28) 3000K CCT, 70 CRI LEDs
Ballast/Driver: -

Summary

Lumens per Lamp: N/A
Luminaire Lumens: 5530 lumens
Efficiency: N/A
Efficacy: 54.1 lumens/watt
Luminous Opening: Rectangular (W 0.67' x L: 1' x H: 0')
IES Classification: Type II - Short - Non-Cutoff
BUG Rating: B0 - U0 - G2

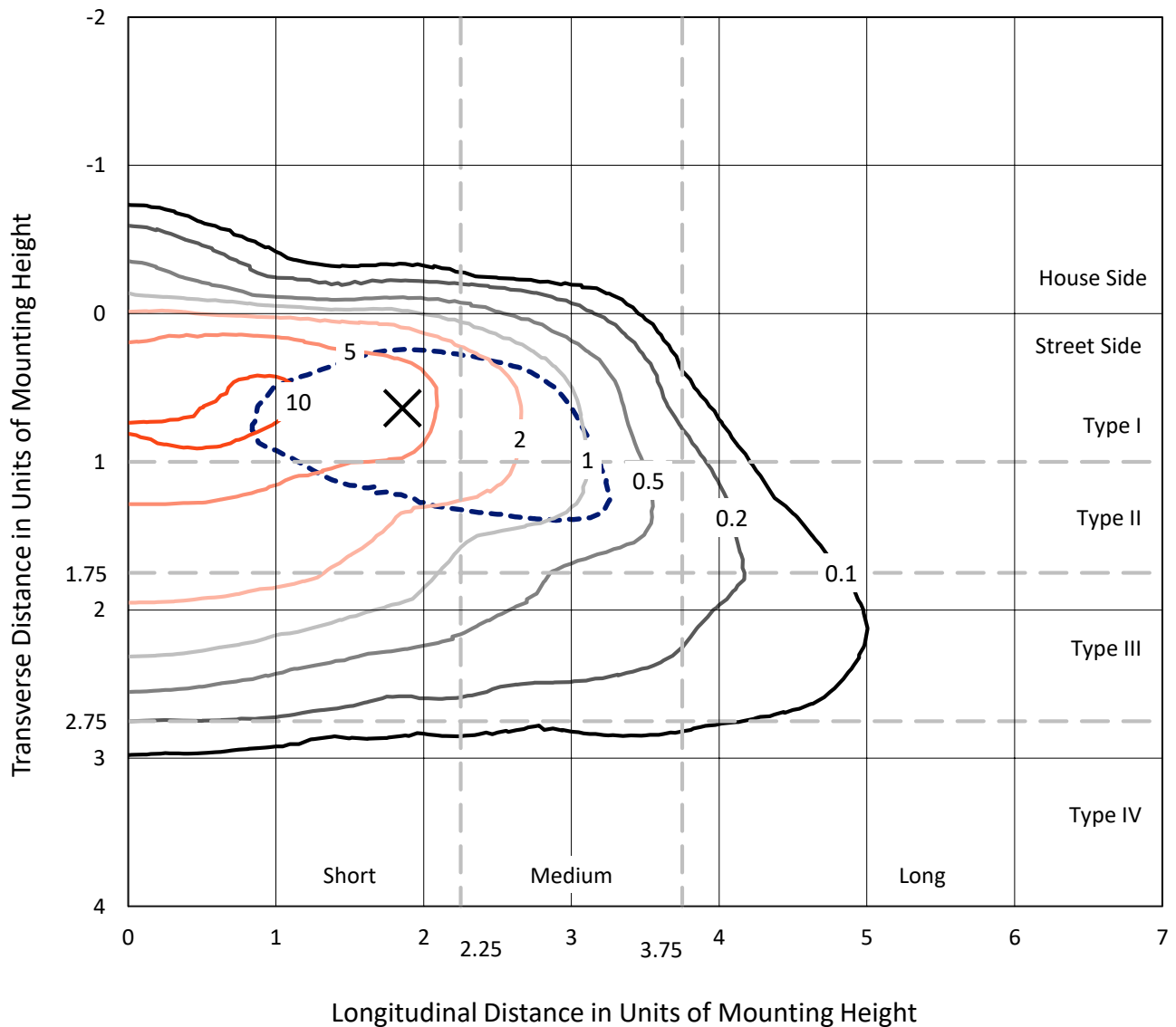
Input Watts (W): 102.2
Input Voltage (V): NR
Input Current (Ain): NR
Voltage Rise (V): NR
Power Factor: NR
Total Harmonic Distortion (THDi): NR
Frequency (hertz): 60
Stabilization Time: NR
Operation Time: NR
Ambient Temperature (°C): NR
Test Distance: 25 FT



REPORT NUMBER: P149384
 CATALOG NUMBER: VWM-F04-LED-E1-SL2-HSS-7030

Iso-Footcandle Lines of Horizontal Illumination

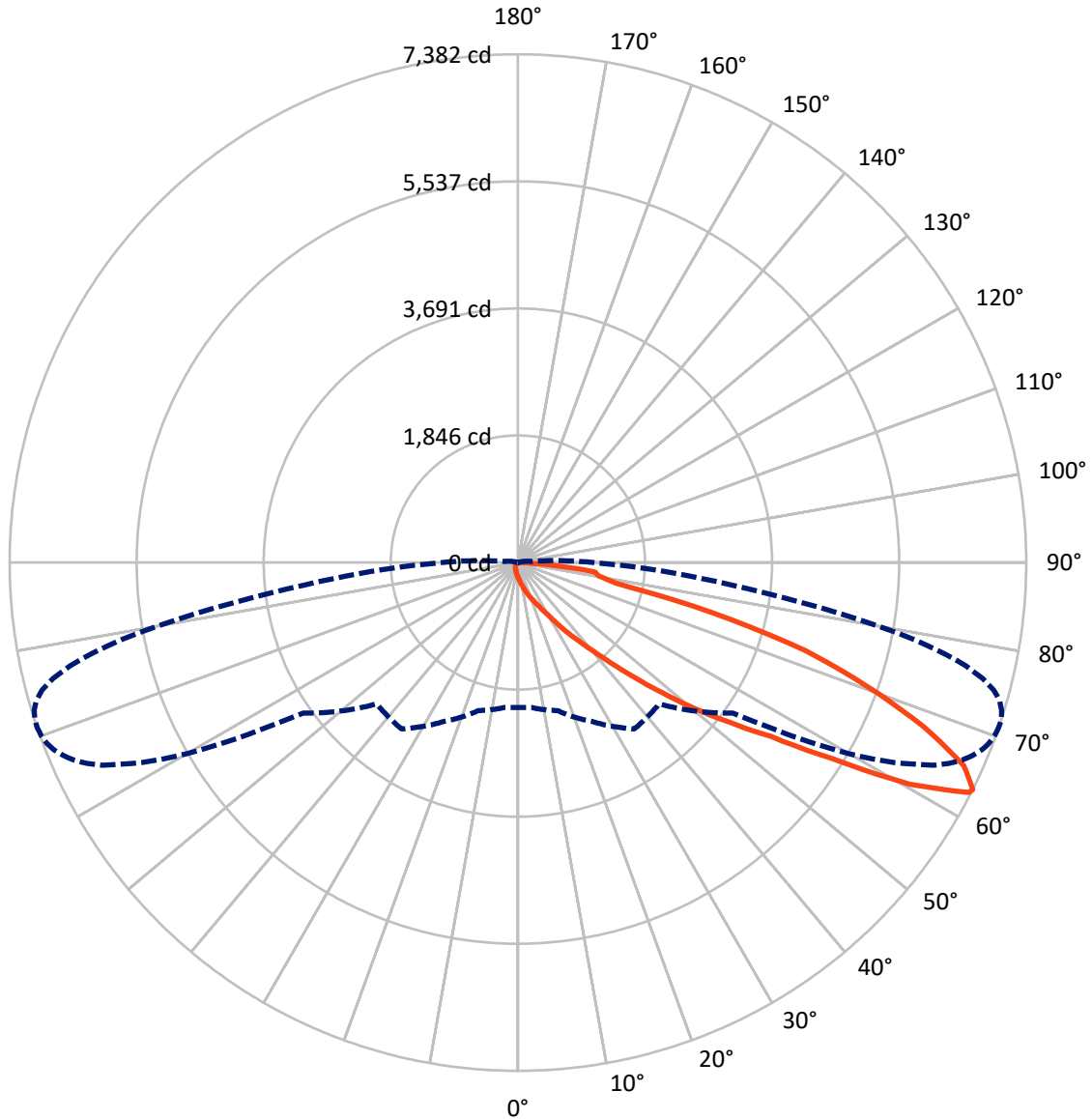
× Max cd
 - - - 1/2 Max cd



Based on 10 foot mounting height. Maximum calculated value = 11.6 fc
 Type II - Short - Non-Cutoff

REPORT NUMBER: P149384
CATALOG NUMBER: VWM-F04-LED-E1-SL2-HSS-7030

Luminous Intensity Polar Plot



— Vertical Plane Through 71-Deg Lateral - - - Horizontal Cone Through 63-Deg Vertical

REPORT NUMBER: P149384

CATALOG NUMBER: VWM-F04-LED-E1-SL2-HSS-7030

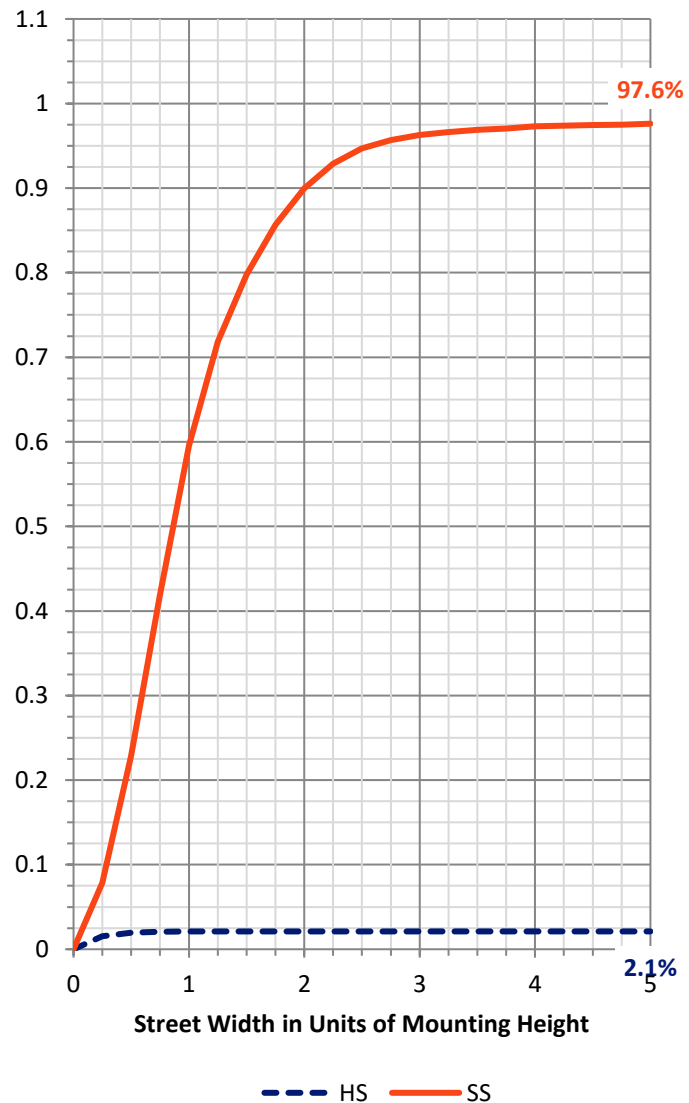
FLUX DISTRIBUTION:

		Downward	Upward	Total
House Side	Lumens	117.4	0.0	117.4
	% Fixture	2.1	0.0	2.1
Street Side	Lumens	5412.6	0.0	5412.6
	% Fixture	97.9	0.0	97.9
Total	Lumens	5530.0	0.0	5530.0
	% Fixture	100.0	0.0	100.0

Coefficient of Utilization

ZONAL LUMENS:

Zone	Lumens	% Fixture
0°-10°	23.4	0.4
10°-20°	90.9	1.6
20°-30°	184.7	3.3
30°-40°	451.2	8.2
40°-50°	1009.1	18.2
50°-60°	1419.0	25.7
60°-70°	1668.6	30.2
70°-80°	602.5	10.9
80°-90°	80.6	1.5
90°-100°	0.0	0.0
100°-110°	0.0	0.0
110°-120°	0.0	0.0
120°-130°	0.0	0.0
130°-140°	0.0	0.0
140°-150°	0.0	0.0
150°-160°	0.0	0.0
160°-170°	0.0	0.0
170°-180°	0.0	0.0
0°-90°	5530.0	100.0
0°-180°	5530.0	100.0



REPORT NUMBER: P149384

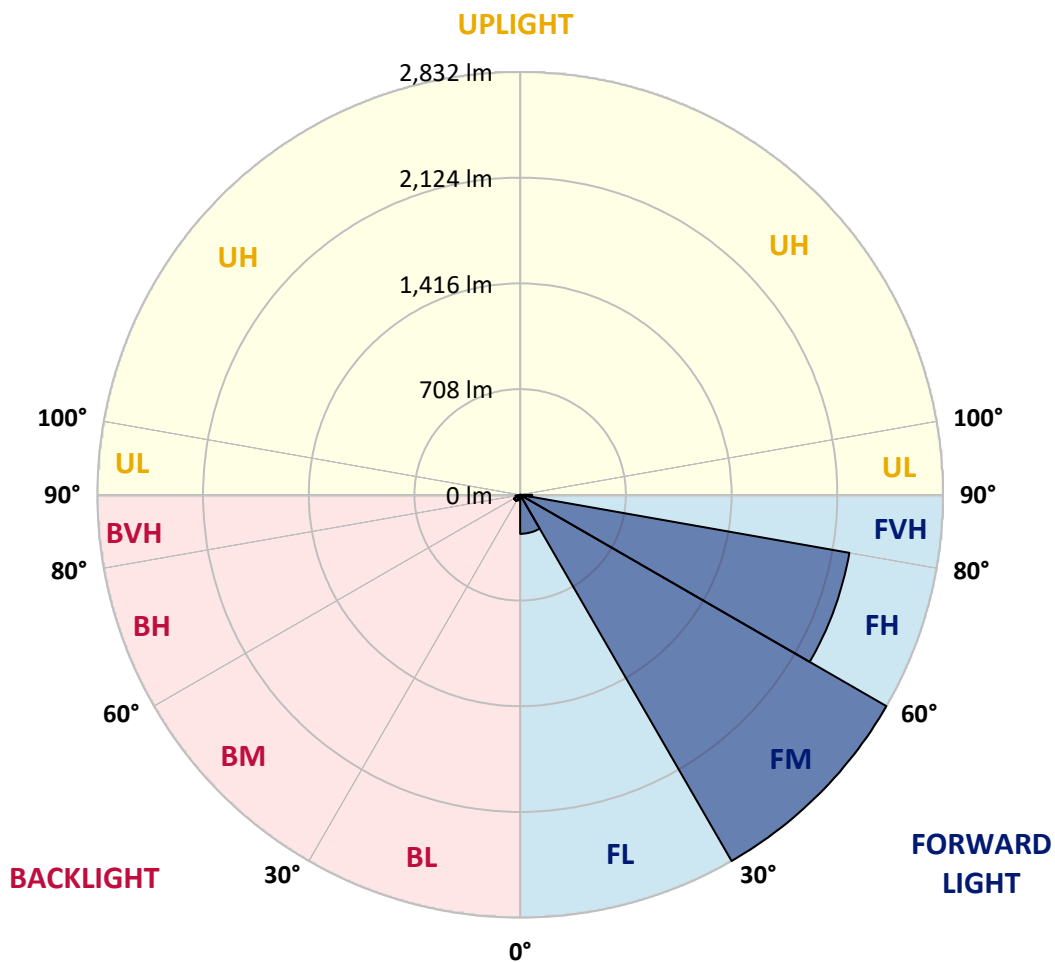
CATALOG NUMBER: VWM-F04-LED-E1-SL2-HSS-7030

LUMINAIRE CLASSIFICATION SYSTEM LUMEN TABLE AND BUG RATING:

Zone		Lumens	% Fixture	Zone Rating/Lumen Limit		
				B	U	G
FL	(0°-30°)	261.3	4.7			
FM	(30°-60°)	2832.0	51.2			
FH	(60°-80°)	2238.9	40.5			G2/5000
FVH	(80°-90°)	80.4	1.5			G1/100
BL	(0°-30°)	37.7	0.7	B0/110		
BM	(30°-60°)	47.3	0.9	B0/220		
BH	(60°-80°)	32.2	0.6	B0/110		G0/110
BVH	(80°-90°)	0.2	0.0			G0/10
UL	(90°-100°)	0.0	0.0		U0/0	
UH	(100°-180°)	0.0	0.0		U0/0	

BUG Rating: B0-U0-G2

Type II Short





REPORT NUMBER: P149384
 CATALOG NUMBER: VWM-F04-LED-E1-SL2-HSS-7030

CANDELA DISTRIBUTION (FULL):

	0°	5°	15°	25°	35°	45°	55°	56°	57°	58°	59°
0°	212.1	212.1	212.1	212.1	212.1	212.1	212.1	212.1	212.1	212.1	212.1
2.5°	277.5	280.5	278.5	273.4	267.4	259.4	252.3	252.3	251.3	248.3	249.3
5°	363.9	364.9	360.9	348.8	337.8	320.7	301.6	299.6	297.6	294.6	293.6
7.5°	448.4	452.4	448.4	435.3	413.2	387.0	356.9	353.9	347.8	347.8	343.8
10°	534.8	534.8	530.8	515.7	495.6	458.4	420.2	415.2	408.2	406.2	400.1
12.5°	596.2	596.2	594.1	586.1	570.0	536.8	490.6	485.6	476.5	473.5	466.5
15°	620.3	620.3	621.3	628.3	629.3	614.3	566.0	562.0	552.9	544.9	541.9
17.5°	635.4	634.4	634.4	644.4	662.5	672.6	641.4	637.4	627.3	623.3	613.2
20°	668.5	666.5	660.5	660.5	677.6	712.8	712.8	711.8	700.7	697.7	692.7
22.5°	717.8	715.8	697.7	682.6	690.7	734.9	776.1	774.1	770.1	766.1	763.0
25°	798.2	791.2	760.0	715.8	708.8	756.0	824.4	829.4	832.4	832.4	834.4
27.5°	919.9	910.8	855.5	773.1	741.9	790.2	877.6	887.7	896.7	898.8	907.8
30°	1088.8	1072.7	993.3	872.6	801.2	840.5	956.1	967.1	980.2	984.2	998.3
32.5°	1366.2	1357.2	1280.8	1099.8	947.0	939.0	1065.6	1079.7	1096.8	1103.8	1120.9
35°	1788.5	1790.5	1728.2	1565.3	1354.2	1243.6	1261.7	1273.7	1279.8	1300.9	1309.9
37.5°	2075.0	2080.0	2094.1	2029.8	1879.0	1766.4	1624.6	1637.7	1606.5	1609.5	1610.5
40°	2231.8	2247.9	2330.3	2392.7	2380.6	2315.3	2201.7	2208.7	2150.4	2137.3	2074.0
42.5°	2336.4	2357.5	2489.2	2682.2	2780.7	2840.0	2813.9	2810.9	2765.6	2748.6	2695.3
45°	2401.7	2420.8	2586.7	2871.2	3098.4	3271.3	3342.7	3350.7	3312.5	3295.5	3251.2
47.5°	2398.7	2420.8	2598.8	2941.6	3276.4	3552.8	3753.9	3763.9	3787.1	3772.0	3775.0
50°	2266.0	2287.1	2466.1	2821.9	3224.1	3681.5	4049.4	4081.6	4118.8	4143.9	4156.0
52.5°	2105.1	2120.2	2279.1	2616.9	3000.9	3628.2	4224.4	4279.7	4335.0	4382.2	4415.4
55°	2045.8	2062.9	2187.6	2468.1	2821.9	3405.0	4305.8	4387.2	4465.7	4543.1	4606.4
57.5°	2077.0	2093.1	2182.6	2397.7	2715.4	3169.8	4328.9	4455.6	4584.3	4709.9	4834.6
60°	2191.6	2208.7	2285.1	2463.0	2687.2	3034.1	4238.4	4448.6	4662.7	4881.9	5087.9
62.5°	2146.4	2153.4	2266.0	2577.7	2888.3	2918.5	3909.7	4203.3	4530.0	4867.8	5200.5
63°	2103.1	2111.2	2225.8	2546.5	2949.6	2901.4	3808.2	4117.8	4462.6	4826.6	5188.5
65°	1907.1	1908.1	1995.6	2248.9	2881.3	2931.5	3355.8	3651.3	4047.4	4483.7	4941.2
67.5°	1423.5	1416.5	1500.9	1694.0	2262.0	2932.5	2880.3	3046.1	3321.6	3708.6	4118.8
70°	504.7	493.6	630.3	897.8	1409.5	2398.7	2475.1	2486.2	2562.6	2771.7	3029.0
72.5°	163.9	166.9	201.1	328.7	649.4	1614.6	2240.9	2206.7	2186.6	2185.6	2219.8
75°	65.3	66.4	80.4	145.8	291.5	778.1	1962.4	1981.5	1988.5	1998.6	2009.6
77.5°	31.2	34.2	45.2	81.4	144.8	385.0	1404.4	1566.3	1658.8	1730.2	1773.4
80°	11.1	13.1	25.1	50.3	67.4	176.9	739.9	892.7	1028.4	1203.4	1354.2
82.5°	0.0	0.0	5.0	35.2	37.2	71.4	303.6	355.9	407.2	527.8	677.6
85°	0.0	0.0	0.0	10.1	11.1	12.1	102.5	123.7	138.7	161.9	187.0
87.5°	0.0	0.0	0.0	0.0	0.0	0.0	1.0	3.0	6.0	15.1	23.1
90°	0.0	0.0	0.0	0.0	0.0	0.0	0.0	0.0	0.0	0.0	0.0



REPORT NUMBER: P149384

CATALOG NUMBER: VWM-F04-LED-E1-SL2-HSS-7030

CANDELA DISTRIBUTION (continued):

	60°	61°	62°	64°	65°	66°	67°	68°	69°	70°	71°
0°	212.1	212.1	212.1	212.1	212.1	212.1	212.1	212.1	212.1	212.1	212.1
2.5°	247.3	246.3	246.3	244.3	243.3	241.3	240.3	237.3	236.3	236.3	236.3
5°	292.5	288.5	286.5	281.5	278.5	277.5	272.4	270.4	267.4	268.4	263.4
7.5°	342.8	335.8	332.8	325.7	323.7	316.7	314.7	309.6	306.6	300.6	298.6
10°	398.1	389.1	384.0	373.0	370.0	364.9	358.9	352.9	347.8	341.8	338.8
12.5°	461.4	453.4	449.4	434.3	427.3	420.2	412.2	404.1	396.1	391.1	384.0
15°	535.8	522.8	518.7	504.7	492.6	483.6	472.5	462.4	456.4	446.4	439.3
17.5°	609.2	596.2	593.1	572.0	559.0	552.9	540.9	527.8	516.7	506.7	495.6
20°	682.6	673.6	665.5	645.4	631.3	621.3	605.2	592.1	583.1	569.0	554.9
22.5°	756.0	747.0	740.9	719.8	706.7	692.7	678.6	664.5	651.5	634.4	618.3
25°	831.4	825.4	822.4	803.3	791.2	778.1	764.0	748.0	731.9	712.8	695.7
27.5°	909.8	911.8	905.8	901.8	888.7	879.7	857.5	846.5	834.4	811.3	790.2
30°	1009.3	1015.4	1013.4	1016.4	1008.3	1002.3	985.2	971.1	957.1	935.0	910.8
32.5°	1135.0	1143.1	1147.1	1158.1	1154.1	1152.1	1147.1	1127.0	1116.9	1078.7	1068.7
35°	1329.0	1325.0	1342.1	1351.2	1347.1	1345.1	1339.1	1328.0	1316.0	1288.8	1263.7
37.5°	1581.4	1585.4	1591.4	1573.3	1561.3	1560.3	1542.2	1531.1	1514.0	1483.9	1453.7
40°	2043.8	2018.7	1990.5	1914.1	1881.0	1861.9	1808.6	1793.5	1764.3	1723.1	1692.0
42.5°	2645.0	2619.9	2535.4	2407.8	2339.4	2244.9	2201.7	2148.4	2107.2	2039.8	2003.6
45°	3242.2	3169.8	3159.7	3010.9	2926.5	2801.8	2724.4	2635.0	2541.5	2453.0	2388.7
47.5°	3745.8	3729.8	3680.5	3590.0	3511.6	3407.0	3307.5	3169.8	3073.3	2947.6	2832.0
50°	4149.0	4148.0	4129.9	4077.6	4012.3	3927.8	3840.3	3723.7	3614.1	3460.3	3336.7
52.5°	4450.6	4466.7	4472.7	4456.6	4431.5	4357.1	4312.8	4215.3	4122.8	3992.1	3858.4
55°	4671.7	4731.1	4761.2	4795.4	4788.4	4762.2	4760.2	4696.9	4654.7	4551.1	4456.6
57.5°	4945.2	5042.7	5136.2	5302.1	5308.1	5366.4	5396.6	5426.7	5434.8	5393.6	5362.4
60°	5293.0	5492.1	5669.0	6015.9	6106.3	6249.1	6341.6	6442.1	6527.6	6534.6	6532.6
62.5°	5538.3	5845.0	6130.5	6645.2	6821.1	6986.0	7109.7	7207.2	7266.5	7326.8	7355.0
63°	5545.4	5881.1	6184.8	6715.6	6900.5	7057.4	7175.0	7265.5	7327.8	7364.0	7382.1
65°	5375.5	5782.6	6144.5	6673.3	6847.3	7005.1	7066.4	7125.7	7155.9	7170.0	7116.7
67.5°	4556.1	4954.2	5376.5	5967.6	6116.4	6305.4	6355.7	6385.8	6399.9	6396.9	6351.6
70°	3407.0	3740.8	4210.3	4885.9	5082.9	5267.9	5382.5	5431.8	5447.9	5442.8	5375.5
72.5°	2378.6	2574.6	2961.7	3713.7	3982.1	4219.3	4361.1	4434.5	4449.6	4419.4	4357.1
75°	1997.6	2007.6	2095.1	2506.3	2757.6	3010.9	3170.8	3217.0	3186.9	3095.4	2936.6
77.5°	1783.4	1805.6	1805.6	1866.9	1916.1	1986.5	2001.6	1889.0	1758.3	1589.4	1452.7
80°	1495.9	1573.3	1627.6	1672.9	1677.9	1663.8	1626.6	1563.3	1462.7	1334.1	1191.3
82.5°	908.8	1061.6	1124.0	1357.2	1471.8	1549.2	1543.2	1458.7	1382.3	1248.6	1127.0
85°	229.2	247.3	268.4	348.8	391.1	477.5	531.8	556.9	566.0	519.8	470.5
87.5°	22.1	15.1	25.1	19.1	27.1	20.1	27.1	25.1	31.2	33.2	36.2
90°	0.0	0.0	0.0	0.0	0.0	0.0	0.0	0.0	0.0	0.0	0.0



REPORT NUMBER: P149384

CATALOG NUMBER: VWM-F04-LED-E1-SL2-HSS-7030

CANDELA DISTRIBUTION (continued):

	72°	73°	74°	75°	76°	77°	78°	79°	80°	81°	82°
0°	212.1	212.1	212.1	212.1	212.1	212.1	212.1	212.1	212.1	212.1	212.1
2.5°	234.2	233.2	232.2	231.2	230.2	229.2	227.2	227.2	225.2	224.2	223.2
5°	260.4	258.4	257.4	255.4	252.3	250.3	247.3	243.3	240.3	239.3	237.3
7.5°	293.6	288.5	286.5	283.5	279.5	273.4	269.4	266.4	261.4	258.4	252.3
10°	330.8	325.7	319.7	313.7	307.6	300.6	295.6	291.5	283.5	279.5	272.4
12.5°	378.0	369.0	361.9	353.9	345.8	337.8	331.8	319.7	312.7	303.6	297.6
15°	426.3	418.2	410.2	400.1	388.1	375.0	369.0	357.9	348.8	334.8	326.7
17.5°	484.6	469.5	457.4	445.4	434.3	422.2	410.2	393.1	380.0	367.9	351.9
20°	541.9	523.8	510.7	494.6	478.5	459.4	445.4	433.3	415.2	399.1	382.0
22.5°	603.2	585.1	564.0	547.9	525.8	510.7	491.6	471.5	453.4	432.3	411.2
25°	677.6	658.5	634.4	613.2	588.1	567.0	543.9	520.8	498.6	474.5	447.4
27.5°	769.1	749.0	722.8	697.7	664.5	638.4	616.3	585.1	556.9	526.8	495.6
30°	884.7	862.6	830.4	794.2	761.0	731.9	700.7	659.5	628.3	592.1	551.9
32.5°	1035.5	1009.3	966.1	931.9	890.7	852.5	809.3	768.1	723.8	676.6	630.3
35°	1225.5	1201.4	1151.1	1100.8	1055.6	1010.4	956.1	908.8	846.5	789.2	729.9
37.5°	1422.5	1379.3	1333.1	1278.8	1222.5	1168.2	1101.8	1036.5	965.1	902.8	828.4
40°	1647.7	1595.5	1557.2	1498.9	1419.5	1342.1	1280.8	1199.4	1109.9	1026.4	939.0
42.5°	1956.4	1898.1	1829.7	1741.2	1683.9	1593.4	1514.0	1417.5	1299.9	1206.4	1100.8
45°	2313.3	2233.8	2167.5	2082.0	2012.7	1900.1	1807.6	1678.9	1561.3	1438.6	1309.9
47.5°	2720.4	2621.9	2525.4	2440.9	2330.3	2219.8	2102.1	1965.4	1814.6	1679.9	1527.1
50°	3187.9	3048.1	2914.4	2805.9	2654.1	2526.4	2398.7	2244.9	2078.0	1923.2	1749.3
52.5°	3707.6	3545.8	3368.8	3202.0	3026.0	2862.2	2708.3	2531.4	2345.4	2156.4	1962.4
55°	4335.0	4213.3	4005.2	3793.1	3557.8	3338.7	3140.6	2921.5	2695.3	2447.0	2242.9
57.5°	5317.2	5257.8	5083.9	4871.8	4565.2	4298.8	3963.0	3694.6	3366.8	3025.0	2761.6
60°	6648.2	6574.8	6477.3	6305.4	6062.1	5700.2	5330.2	4913.0	4414.4	3940.9	3491.5
62.5°	7358.0	7331.8	7252.4	7133.8	6906.6	6621.1	6248.1	5789.7	5226.7	4651.6	4078.6
63°	7379.1	7345.9	7277.5	7156.9	6956.8	6680.4	6314.4	5869.1	5318.2	4732.1	4147.0
65°	7093.6	7080.5	7011.1	6879.4	6742.7	6531.6	6248.1	5865.1	5402.6	4848.7	4266.6
67.5°	6291.3	6252.1	6145.5	6105.3	6009.8	5863.1	5646.9	5383.5	5052.8	4617.5	4114.8
70°	5321.2	5262.9	5129.2	5057.8	4941.2	4848.7	4717.0	4529.0	4324.9	4021.3	3646.3
72.5°	4292.7	4172.1	4049.4	3863.5	3700.6	3535.7	3390.0	3257.3	3033.1	2910.4	2625.9
75°	2787.8	2568.6	2358.5	2077.0	1823.7	1599.5	1381.3	1270.7	1040.5	947.0	813.3
77.5°	1323.0	1200.4	1035.5	907.8	744.9	608.2	496.6	373.0	292.5	229.2	174.9
80°	1067.7	964.1	864.6	749.0	626.3	499.6	383.0	286.5	203.1	140.7	99.5
82.5°	952.0	839.4	716.8	637.4	553.9	453.4	372.0	303.6	224.2	163.9	111.6
85°	370.0	311.7	240.3	196.0	152.8	125.7	113.6	78.4	61.3	48.3	37.2
87.5°	32.2	26.1	21.1	14.1	15.1	8.0	9.0	6.0	5.0	5.0	4.0
90°	0.0	0.0	0.0	0.0	0.0	0.0	0.0	0.0	0.0	0.0	0.0



REPORT NUMBER: P149384

CATALOG NUMBER: VWM-F04-LED-E1-SL2-HSS-7030

CANDELA DISTRIBUTION (continued):

	83°	84°	85°	86°	87°	88°	89°	90°	95°	105°	115°
0°	212.1	212.1	212.1	212.1	212.1	212.1	212.1	212.1	212.1	212.1	212.1
2.5°	222.2	221.2	220.2	218.2	218.2	216.1	215.1	214.1	209.1	198.0	189.0
5°	233.2	231.2	229.2	226.2	224.2	221.2	219.2	216.1	205.1	184.0	165.9
7.5°	249.3	245.3	242.3	236.3	233.2	229.2	226.2	221.2	203.1	170.9	145.8
10°	268.4	261.4	256.4	249.3	243.3	238.3	233.2	226.2	201.1	156.8	127.7
12.5°	291.5	283.5	273.4	265.4	257.4	250.3	243.3	234.2	198.0	144.8	113.6
15°	314.7	302.6	295.6	284.5	273.4	263.4	253.3	245.3	199.1	131.7	101.5
17.5°	340.8	328.7	313.7	301.6	289.5	276.5	264.4	248.3	194.0	121.6	92.5
20°	365.9	348.8	334.8	319.7	302.6	286.5	271.4	257.4	190.0	111.6	84.4
22.5°	393.1	373.0	354.9	335.8	314.7	296.6	278.5	260.4	183.0	102.5	77.4
25°	426.3	403.1	377.0	353.9	331.8	309.6	286.5	264.4	175.9	94.5	72.4
27.5°	466.5	436.3	410.2	381.0	349.9	321.7	296.6	272.4	168.9	88.5	67.4
30°	517.7	482.6	445.4	408.2	375.0	342.8	307.6	277.5	161.9	82.4	62.3
32.5°	586.1	541.9	496.6	453.4	409.2	367.9	330.8	291.5	157.8	77.4	57.3
35°	676.6	619.3	564.0	509.7	456.4	406.2	357.9	313.7	157.8	71.4	51.3
37.5°	762.0	695.7	625.3	558.0	494.6	436.3	379.0	325.7	149.8	66.4	46.2
40°	854.5	775.1	692.7	613.2	536.8	464.5	399.1	337.8	142.8	60.3	41.2
42.5°	996.3	895.7	788.2	695.7	604.2	514.7	433.3	360.9	133.7	54.3	36.2
45°	1182.3	1054.6	927.9	815.3	698.7	589.1	492.6	403.1	131.7	49.3	31.2
47.5°	1381.3	1230.5	1081.7	938.0	801.2	673.6	558.0	450.4	131.7	44.2	27.1
50°	1579.4	1390.4	1231.5	1064.6	910.8	760.0	622.3	499.6	132.7	40.2	22.1
52.5°	1758.3	1556.2	1378.3	1185.3	1015.4	840.5	690.7	547.9	130.7	35.2	18.1
55°	2006.6	1769.4	1563.3	1350.2	1151.1	954.1	784.2	620.3	131.7	31.2	15.1
57.5°	2464.1	2185.6	1937.3	1657.8	1428.6	1174.2	968.1	769.1	143.8	26.1	11.1
60°	3120.5	2758.6	2409.8	2069.0	1777.4	1474.8	1207.4	973.2	168.9	21.1	8.0
62.5°	3561.9	3088.4	2672.2	2296.2	1957.4	1640.7	1349.1	1082.7	186.0	17.1	5.0
63°	3607.1	3117.5	2699.3	2311.2	1965.4	1648.7	1355.2	1090.8	187.0	16.1	5.0
65°	3692.6	3167.8	2714.4	2314.3	1957.4	1637.7	1351.2	1089.8	189.0	13.1	4.0
67.5°	3595.0	3090.4	2626.9	2227.8	1887.0	1572.3	1300.9	1049.6	188.0	9.0	3.0
70°	3215.0	2796.8	2389.7	2017.7	1708.0	1423.5	1184.3	957.1	172.9	6.0	2.0
72.5°	2360.5	2076.0	1760.3	1491.9	1286.8	1068.7	911.8	718.8	133.7	4.0	1.0
75°	699.7	637.4	535.8	472.5	417.2	344.8	306.6	239.3	68.4	2.0	0.0
77.5°	139.7	126.7	113.6	103.5	97.5	83.4	79.4	65.3	28.1	1.0	0.0
80°	73.4	60.3	51.3	45.2	39.2	32.2	27.1	22.1	5.0	0.0	0.0
82.5°	70.4	47.3	34.2	28.1	24.1	19.1	15.1	11.1	3.0	0.0	0.0
85°	26.1	20.1	15.1	12.1	10.1	9.0	7.0	6.0	0.0	0.0	0.0
87.5°	4.0	3.0	3.0	2.0	2.0	1.0	1.0	1.0	0.0	0.0	0.0
90°	0.0	0.0	0.0	0.0	0.0	0.0	0.0	0.0	0.0	0.0	0.0



REPORT NUMBER: P149384

CATALOG NUMBER: VWM-F04-LED-E1-SL2-HSS-7030

CANDELA DISTRIBUTION (continued):

	125°	135°	145°	155°	165°	175°	180°
0°	212.1	212.1	212.1	212.1	212.1	212.1	212.1
2.5°	180.0	171.9	167.9	162.9	162.9	161.9	163.9
5°	149.8	138.7	130.7	124.7	125.7	122.6	123.7
7.5°	126.7	115.6	108.6	104.6	103.5	102.5	102.5
10°	109.6	99.5	93.5	90.5	89.5	89.5	89.5
12.5°	97.5	87.5	82.4	80.4	80.4	79.4	79.4
15°	87.5	79.4	74.4	72.4	72.4	71.4	72.4
17.5°	79.4	71.4	67.4	65.3	65.3	64.3	64.3
20°	72.4	65.3	61.3	58.3	58.3	57.3	58.3
22.5°	66.4	59.3	54.3	52.3	51.3	50.3	51.3
25°	60.3	53.3	48.3	45.2	44.2	44.2	43.2
27.5°	55.3	48.3	42.2	39.2	38.2	38.2	37.2
30°	50.3	42.2	36.2	33.2	32.2	32.2	32.2
32.5°	45.2	36.2	31.2	28.1	27.1	27.1	27.1
35°	40.2	31.2	26.1	23.1	22.1	22.1	22.1
37.5°	34.2	26.1	20.1	18.1	17.1	16.1	16.1
40°	29.2	20.1	15.1	13.1	11.1	11.1	11.1
42.5°	24.1	16.1	11.1	8.0	7.0	6.0	7.0
45°	20.1	12.1	7.0	4.0	3.0	3.0	3.0
47.5°	16.1	8.0	3.0	1.0	1.0	1.0	1.0
50°	12.1	5.0	1.0	0.0	0.0	1.0	1.0
52.5°	9.0	3.0	0.0	0.0	0.0	0.0	0.0
55°	5.0	1.0	0.0	0.0	0.0	0.0	0.0
57.5°	3.0	0.0	0.0	0.0	0.0	0.0	0.0
60°	2.0	0.0	0.0	0.0	0.0	0.0	0.0
62.5°	1.0	0.0	0.0	0.0	0.0	0.0	0.0
63°	1.0	0.0	0.0	0.0	0.0	0.0	0.0
65°	1.0	0.0	0.0	0.0	0.0	0.0	0.0
67.5°	0.0	0.0	0.0	0.0	0.0	0.0	0.0
70°	0.0	0.0	0.0	0.0	0.0	0.0	0.0
72.5°	0.0	0.0	0.0	0.0	0.0	0.0	0.0
75°	0.0	0.0	0.0	0.0	0.0	0.0	0.0
77.5°	0.0	0.0	0.0	0.0	0.0	0.0	0.0
80°	0.0	0.0	0.0	0.0	0.0	0.0	0.0
82.5°	0.0	0.0	0.0	0.0	0.0	0.0	0.0
85°	0.0	0.0	0.0	0.0	0.0	0.0	0.0
87.5°	0.0	0.0	0.0	0.0	0.0	0.0	0.0
90°	0.0	0.0	0.0	0.0	0.0	0.0	0.0

(END OF REPORT)